

The Worldwide Construction Machinery Market

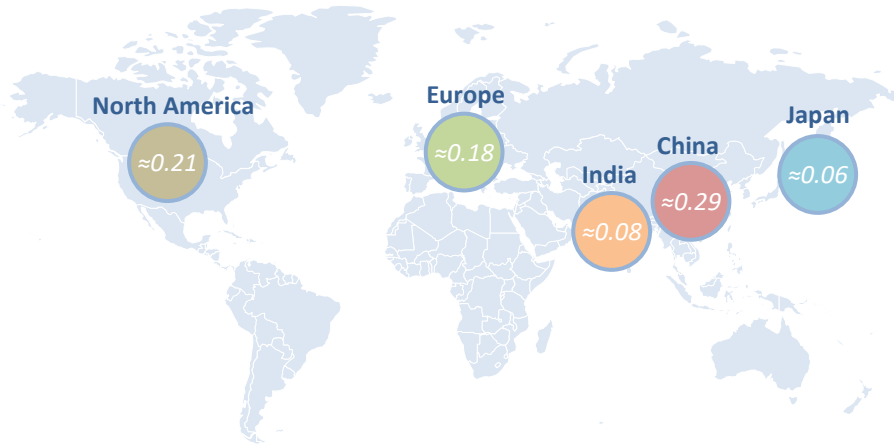
Market Snapshot



The Worldwide Construction Machinery Market

Market Snapshot

Worldwide sales of construction machinery (ø/year in million units)



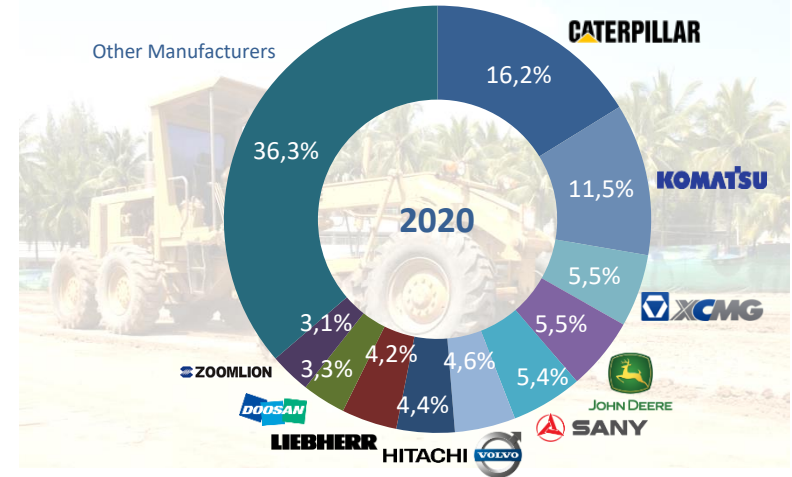
Worldwide: ≈1.13 Mio. Other Countries: ≈0.31 Mio.

Construction machinery by equipment type



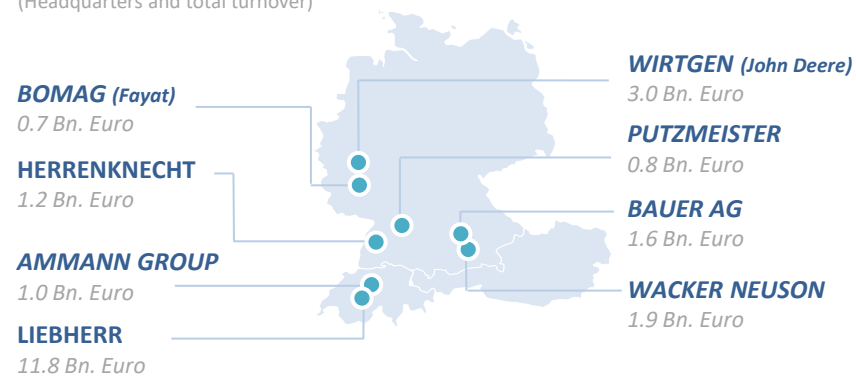
Content DTO – B2B Research & Strategies (2020)

Market share of construction equipment manufacturers



Major construction machinery manufacturers in DACH

Companies with origin in the DACH market: Germany, Austria & Switzerland (Headquarters and total turnover)



Production sites of foreign manufacturers were not included in this diagram.



Contact

DTO – a brand of DTO Consulting GmbH

Headquarters Düsseldorf

Benrather Schloßallee 33
40597 Düsseldorf
Germany

+49 211 / 179 660-0
info@dto-research.de
www.dto-research.de

Branch Office Singapore

German Centre for Industry and Trade
25 International Business Park Rd
Singapore 609916 | Singapore

+65 8423 9380
info@dto-research.com
www.dto-research.com